

# HOUSE AND LAND PACKAGES



Lot 312 Pamela Avenue, EVERGREEN WATERS  
EVERGREEN WATERS ESTATE

Priced From

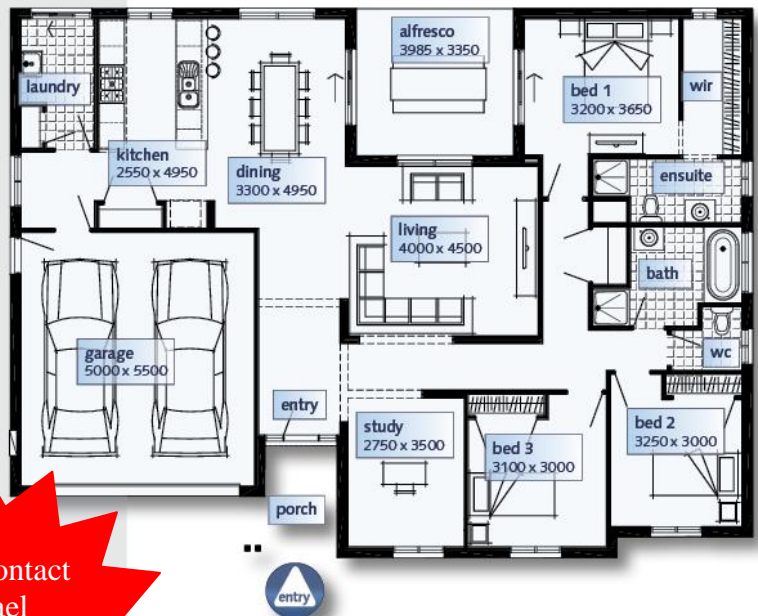
**\$297,768**

- House and land
- Carpets and tiles throughout
- Gas ducted heating
- Evaporative cooling
- Remotes to garage
- **GUARANTEED** site start date
- Semi framed shower screens
- Solar hot water service

- Flyscreens and fly doors
- The choice of 6 facades
- 900mm S/ steel appliances
- Termite protection
- Panel lift garage door
- Luxury basins and bath
- Stainless steel dishwasher
- Finance services available



CAROLINA		
DIMENSIONS	SQ.M	SQUARES
Ground Floor	162.88m <sup>2</sup>	17.53Sqs
Porch	13.18m <sup>2</sup>	1.42Sqs
Garage	36.17m <sup>2</sup>	3.89Sqs
<b>Total area</b>	<b>225.21m<sup>2</sup></b>	<b>24.24Sqs</b>
WIDTH 17.51m		
DEPTH 11.51m		
Suggested minimum block width: 20.00m Living Homes Specification		



Please Contact  
Michael Sokolowski  
0427 854 618

[michael.sokolowski@simonds.com.au](mailto:michael.sokolowski@simonds.com.au)

**SIMONDS**  
we're in it together

Finance to approved applicants only. Images shown for illustrative purposes and may not represent the final product. Prices are based on availability and price of land. Simonds reserves the right to alter any price or substitute any home without prior notice. All house and land packages are subject to developers' final approval. In the event that a Homesite does not have Survey Pegs in place to identify lot boundary then an additional charge will be added to the cost of the house.