

HOUSE AND LAND PACKAGES



Lot 221 Evergreen Boulevard, EVERGREEN WATERS
EVERGREEN WATERS ESTATE

Priced From

\$347,768

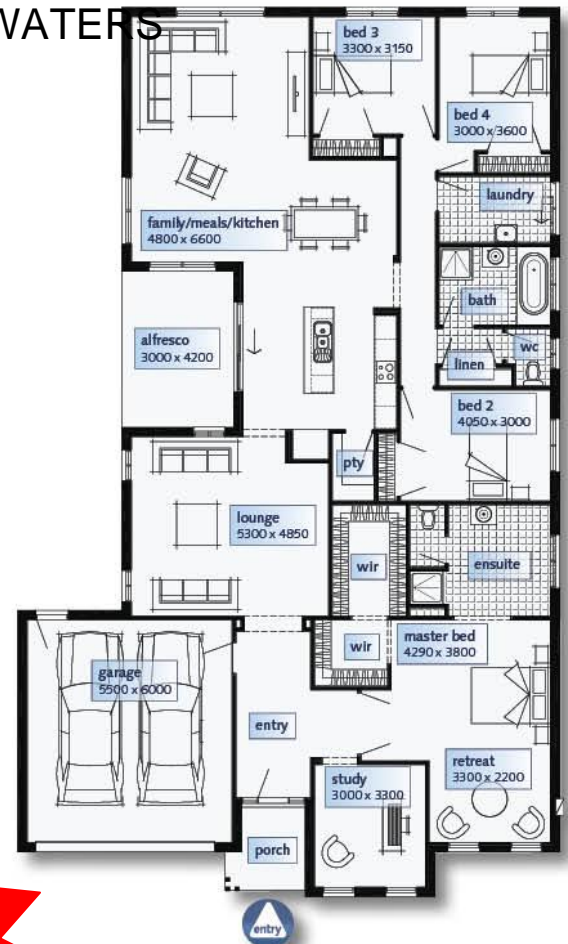
- House and land
- Carpets and tiles throughout
- Gas ducted heating
- Evaporative cooling
- Remotes to garage
- **GUARANTEED** site start date
- Semi framed shower screens
- Solar hot water service

- Flyscreens and fly doors
- The choice of 6 facades
- 900mm S/ steel appliances
- Termite protection
- Panel lift garage door
- Luxury basins and bath
- Stainless steel dishwasher
- Finance services available



LIVORNO

DIMENSIONS	SQ.M	SQUARES
Ground Floor	237.11m ²	25.52Sqs
Porch	4.80m ²	0.52Sqs
Alfresco	12.63m ²	1.36Sqs
Garage	36.85m ²	3.97Sqs
Total area	291.39m ²	31.37Sqs
WIDTH 14.55m		
DEPTH 23.87m		
Suggested minimum block width: 15.95m Living Homes Specification		



Please Contact
Michael
Sokolowski
0427 854 618

michael.sokolowski@simonds.com.au

SIMONDS
we're in it together

Finance to approved applicants only. Images shown for illustrative purposes and may not represent the final product. Prices are based on availability and price of land. Simonds reserves the right to alter any price or substitute any home without prior notice. All house and land packages are subject to developers' final approval. In the event that a Homesite does not have Survey Pegs in place to identify lot boundary then an additional charge will be added to the cost of the house.